

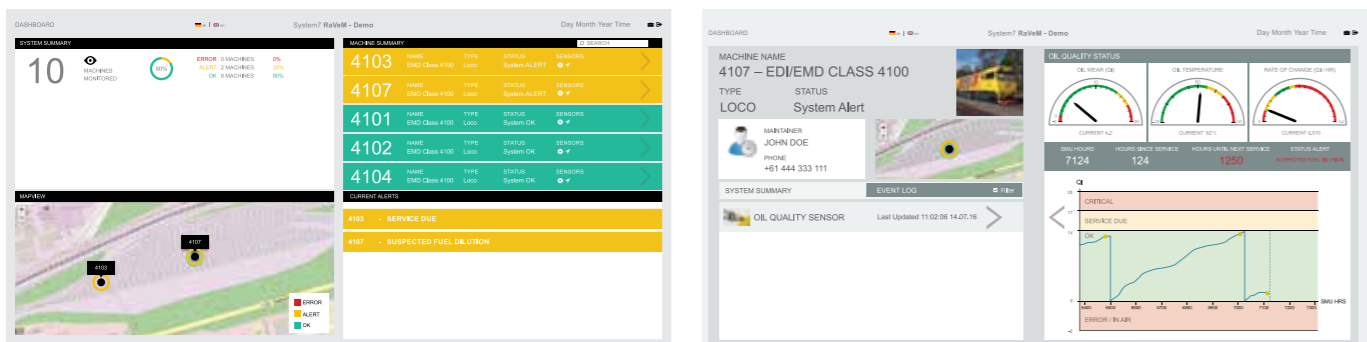


RaVeM





## REAL TIME EQUIPMENT MONITORING TECHNOLOGY



System 7's RaVeM is a secure, web-based equipment monitoring system delivering real time data on the location, condition and performance of your equipment, allowing for a more planned and proactive condition-based maintenance regime.

RaVeM is System 7's intelligent condition monitoring program with integrated predictive algorithms reviewing trends and patterns to identify problems before catastrophic failure occurs.

Continual monitoring of your equipment's real time data will ensure your equipment operates at Ultimate Performance including increased reliability and improved service intervals. A fully configurable system, RaVeM works independently or can be integrated with your existing system.

## FULLY ACCESSIBLE WEB-BASED SYSTEM

RaVeM is a secure, password-protected web-based platform that ensures the security of your data. Information is accessible on all devices at any time, giving you real time data on the performance and reliability of your equipment when you need it most.

## REAL TIME ALERTS

The system has a fully customisable automatic alert system and will instantly notify you via either text or email when a predetermined event occurs.

## AREAS OF USE

RaVeM can be configured to monitor and analyse any number of parameters including:

- » Oil quality
- » Bearing temperatures
- » Coolant systems
- » Load
- » Collision impact
- » Braking system
- » Humidity
- » Diesel consumption
- » Temperature
- » Tamping units
- » Gear boxes

## INTEGRATED AUTOMATIC LOGBOOK SYSTEM

RaVeM allows for a more effective and proactive scheduled maintenance system with an inbuilt cloud-based maintenance and breakdown logbook system. The system automatically records all reported fault codes and events as well as the ability to manually add maintenance events and logs downloaded from machine ECM.

## SYSTEM BENEFITS

- ↔ Increased service intervals
- ⚙ Improved reliability
- 💰 Reduced maintenance costs
- ⚠ Automatic notification of issues before a failure occurs
- 📅 Integrated logbook system for planned scheduled maintenance
- 🔒 Secure and password protected system
- ⚙ Increased equipment life cycle
- 👤 Key asset data at your fingertips
- ⚙ Accurately forecast maintenance requirements
- 📱 Real time equipment monitoring including equipment location, condition and performance data





## SYSTEM 7

System 7 consists of a team with vast amounts of experience across a variety of disciplines, bringing together a wealth of knowledge to create a range of leading products to many vital Australian and International sectors.

With a focus on sustainability and environmental awareness, our products are developed to withstand the harshest conditions, and are extensively quality tested to assure their suitability in any environment.



## OUR VISION

System 7 aims to be Australia's leading manufacturer of innovative new rail and condition monitoring technologies that work to increase equipment efficiency, minimise life cycle costs and **Drive Ultimate Performance**.



## OUR MISSION

System 7 continue to challenge boundaries and create tailored, intuitive technologies relevant to increasing the productivity of Australia's major rail, mining, defence, transport, agricultural, marine and fixed plant industries.



## BESPOKE PROJECTS

At System 7, we pride ourselves on our commitment and dedication to working closely with our clients to deliver tailored, client-focused outcomes. Our flexibility and willingness to meet the needs of our clients is what sets us apart.

Our aim is to deliver products that are:

- » At the forefront of new technology
- » Intuitive to use
- » Of the highest quality
- » Sustainable

That together will:

- » Minimise equipment life cycle costs
- » Reduce maintenance expenses
- » Maximise efficiency and
- » **Drive Ultimate Performance**

 [www.s7australia.com](http://www.s7australia.com)  
 (02) 4932 1178  
 [info@s7australia.com](mailto:info@s7australia.com)  
 37 Spitfire Place, Rutherford NSW 2320

**system**7  
Australia  
Driving Ultimate Performance